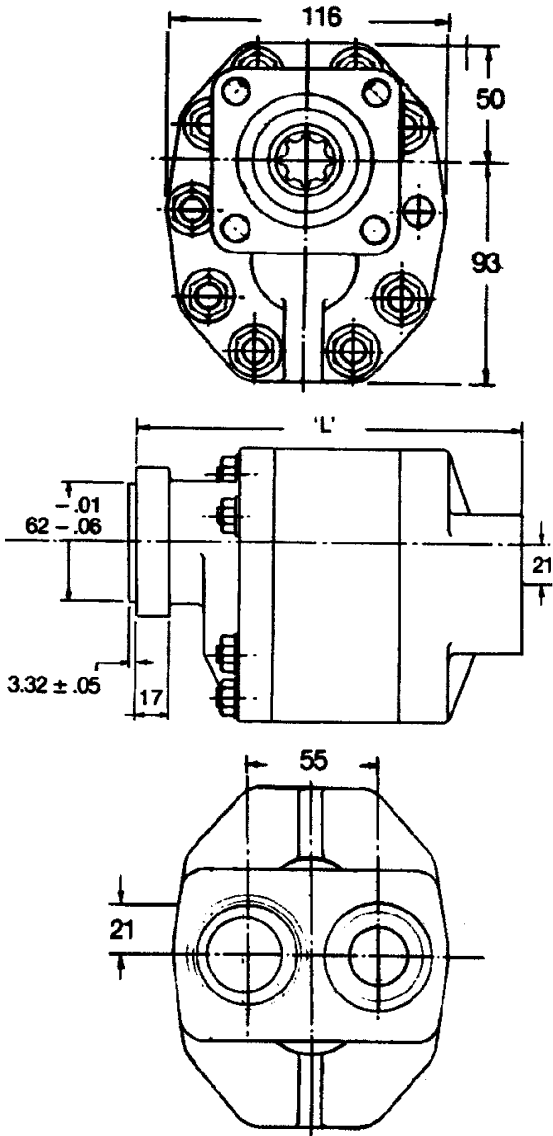
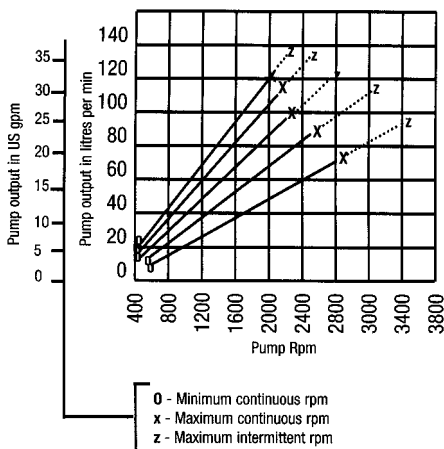


Barry Stoodley Pty Ltd

"CF" SERIES PUMP TECHNICAL DATA



Representative Performance Data



PUMP DESIGNATION CODES

CF series pump

PU CF 0 18 R *

Identifier

PU = Pump

Pump Series

CF

Rotation

O = Opposite to engine

S = Same as engine

Flow @ 1000 RPM

09 = 20 l/min (5.3 g/min)

12 = 29 l/min (7.7 g/min)

15 = 39 l/min (10.3 g/min)

18 = 48 l/min (12.7 g/min)

21 = 58 l/min (15.3 g/min)

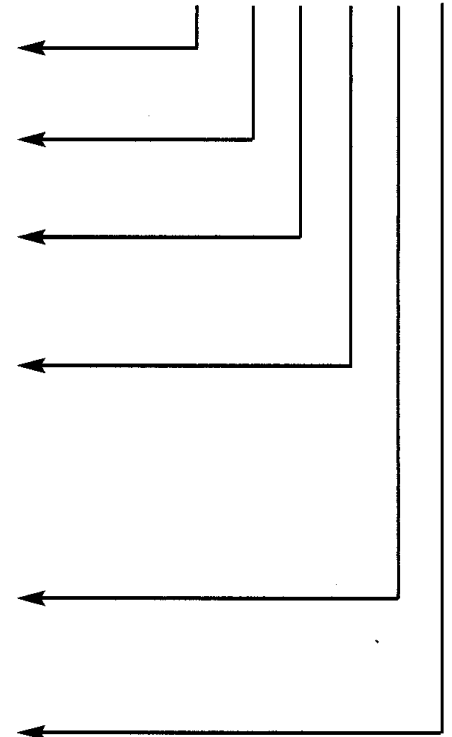
Porting

R = rear porting

S = side porting

Manufacturers Code

(internal use only, if required)



Technical Specifications	Pump Size				
	CF9	CF12	CF15	CF18	CF21
Theoretical displacement per revolution ml(cu. in.)	28.4 (1.73)	37.9 (2.31)	47.2 (2.88)	56.7 (3.36)	66.2 (4.04)
Minimum Suction Line Inside Diameter	32 (1 1/4")	32 (1 1/4")	32 (1 1/4")	38 (1 1/2")	38 (1 1/2")
Pressure Rating Bar (PSI)	210 (3050)	210 (3050)	200 (2980)	172 (2500)	145 (2100)
Pump Port Sizes	Suction 1 1/4" BSPT Outlet 3/4" BSPT	Suction 1 1/4" BSPT Outlet 3/4" BSPT	Suction 1 1/4" BSPT Outlet 3/4" BSPT	Suction 1 1/4" BSPT Outlet 3/4" BSPT	Suction 1 1/4" BSPT Outlet 3/4" BSPT
Approximate Bare Mass Kg/lb	7.0 (15.4)	7.5 (16.5)	8.0 (17.6)	8.6 (19.0)	9.4 (20.7)
Seal kit	SK003				
Overall Length	168	176	184	193	201

For full details refer to Powauto or consult your applications book.

Note: Powauto recommends the use of filtration (min 25µ) in your hydraulic system. Warranty valid if pump seal removed.

Useful Formulae

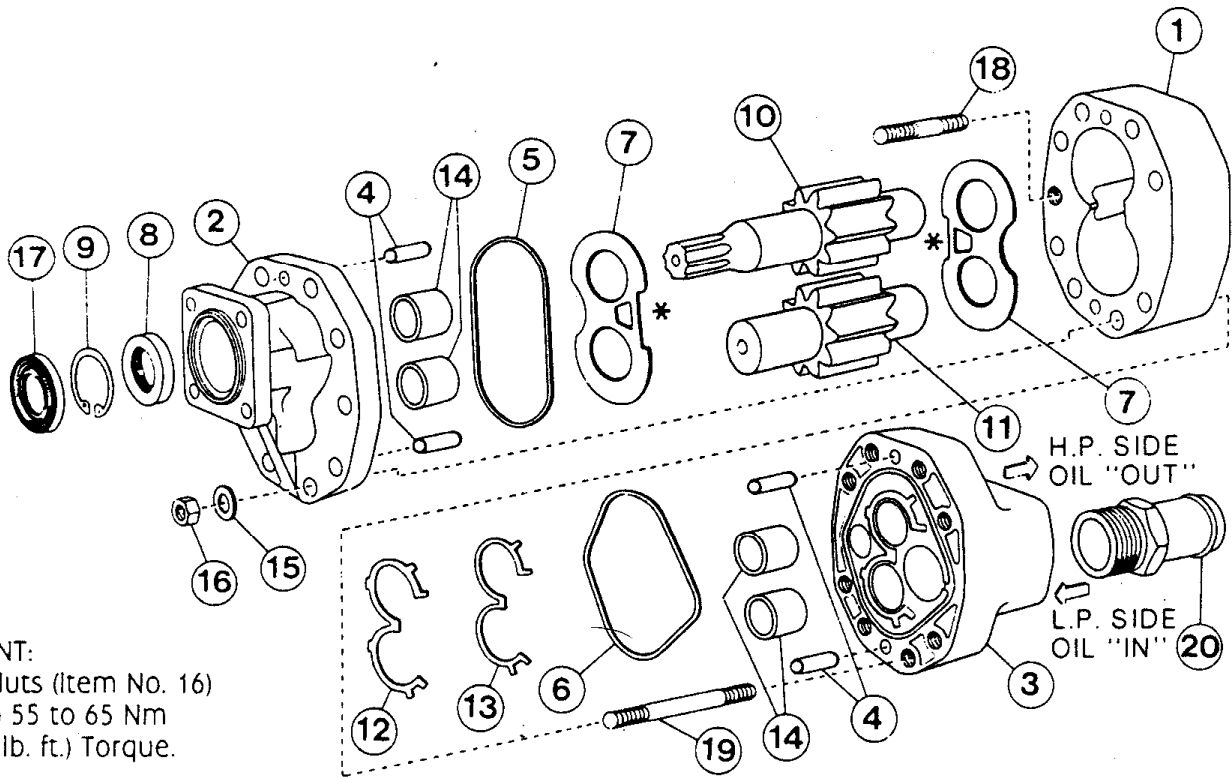
Pump Torque required (Nm/lb.ft)

$$F(\text{Nm}) = \frac{\text{pump size no.} \times \text{max press (bar)}}{16 \text{ psi}}$$

$$F(\text{lb.ft}) = \frac{\text{pump size no.} \times \text{max press (psi)}}{313}$$

Barry Stoodley Pty Ltd

"CF" SERIES PUMP SPARE PARTS



IMPORTANT:
Tighten Nuts (Item No. 16)
evenly to 55 to 65 Nm
(40 to 50 lb. ft.) Torque.

Seal Kit: SK003

SERIES CF PUMPS COMMON PARTS LIST			
ITEM	PART No.	QTY	DESCRIPTION
2	33128	1	Front Cover Assy. Inc. 2 of Item 14
3	33129	1	Rear Cover Assy. Inc. 2 of Item 14
4	31305B	4	Dowels
5	45107	1	Front Gasket
6	45108	1	Rear Gasket
7	28233	2	Thrust Plate
8	46015	1	Seal
9	39998U	1	Circlip
12	45105	1	Back-up Seal
13	45106	1	Balance Seal
14	88001AQ	4	Bearings
15	28993F	9	Washers
16	41940F	9	Nuts
17	46001T	1	Oil Seal
18	30065	1	Stud

*INSERT PUMP SIZE AT END OF P/NUMBER			
Item	Part no	Qty	Description
1	25160C1-	1	Body
10	26227-	1	Drive gear
11	26228-	1	Idler gear
19	30064-	8	Studs
20	38043-	1	Inlet hose
20	38050-	1	Inlet hose tail

*Example: Model = CFO12 (last 2 digits
denotes size)
Part no = 26227-, add pump size (12)
Part no is: 2622712

ASSEMBLY SEQUENCE

Opposite rotation shown here.

For "same" rotation reverse position of gears together with the front cover.

NOTE: All other components must be assembled in the relative position shown below at all times. Be careful to observe the position of the window (*) in the thrust plates on assembly. The bronze faces of the thrust plates must face toward the gears.

Further reference: POWAUTO Data Sheet Series "CF" Pumps