

Barry Stoodley Pty Ltd

JOST Modul Telescopic Landing Gear

Flexibility due to a modular ordering system

The ordering system allows clients to choose and put together a set of legs to suit their needs.



Installation height

	max. lift
02 = 850mm	520mm
03 = 800mm	470mm
05 = 700mm	400mm

Foot versions

	Part No.
00 = without foot	
fitted	
01 = S Foot compensating foot	JS D01
02 = A Foot rocking foot	JS D02
03 = R Foot wheels	JS D03
04 = T Foot sand shoe	JS D04
06 = Low Profile T	JS D06

Crank handle with parking hook

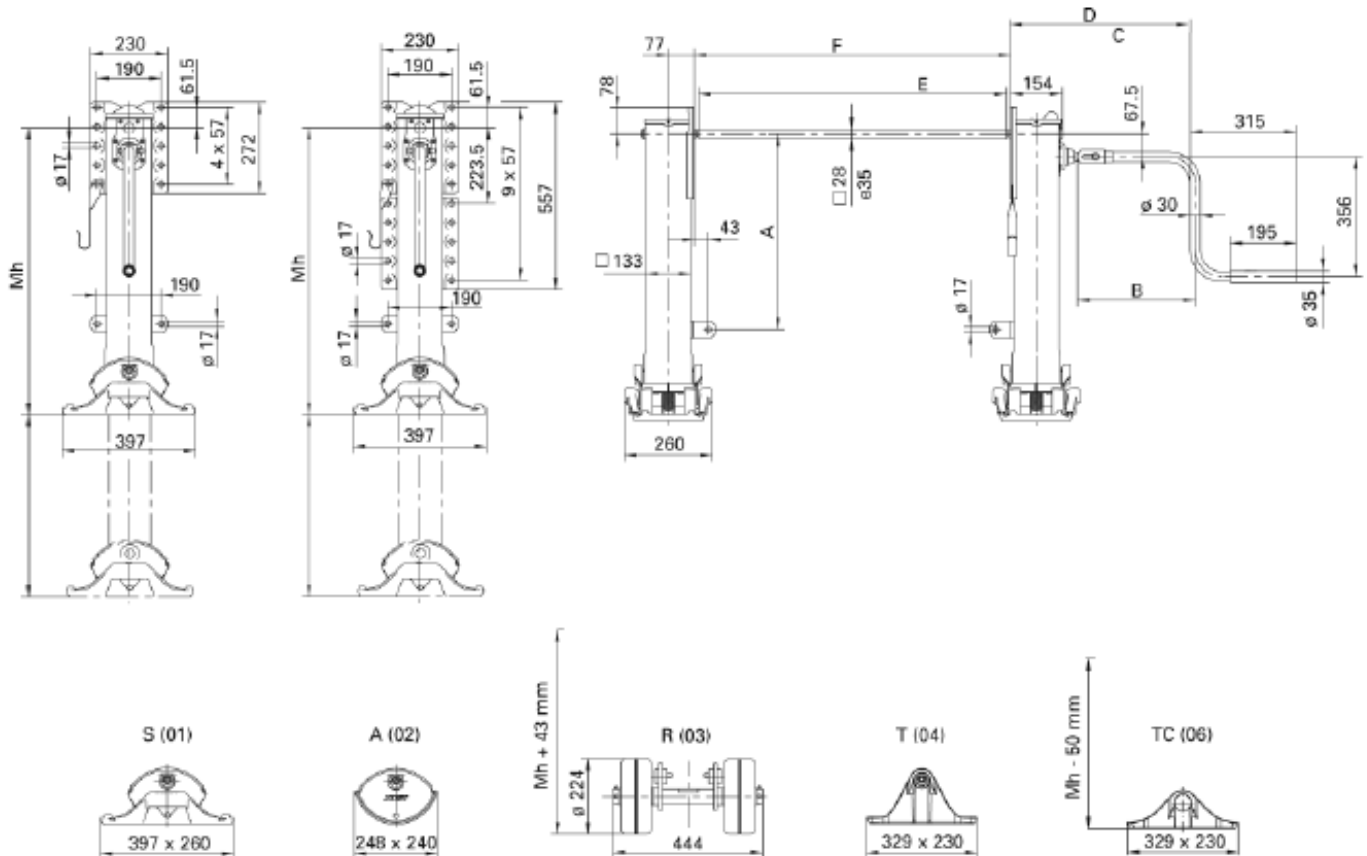
03 = 450mm	Optional
05 = 520mm	Standard

Connection Shaft

10 = 1790mm	Standard
-------------	----------

Barry Stoodley Pty Ltd

JOST Modul Telescopic Landing Gear



Landing gear			
Reference	Mh	Lift	A
M02	850	520	580
M03	800	470	530
M05	700	400	430

Crank handle			
Reference	B	C	D
JS U03	450	634	658
JS U05*	520	704	728

Technical data (per set)	
Modul B	
Lifting capacity	24t
Static load	50t
	35t with wheels
Lift per turn of handle	
- low gear	0.9mm
- high gear	15.0mm
Crank force at 16t super imposed load	210N

Connection shafts		
Reference	E	F
JS L10*	1790	1815

* Standard with set of legs.

Subject to change in dimensions and design

*No brace lugs are supplied for the combinations of installation height 04, 05, 06, 24 and back plate 02, 03. For loose brace lugs see accessories.

Foot versions	
00 = without foot	
fitted	
JSD01 = S Foot	compensating foot
JSD02 = A Foot	rocking foot
JSD03 = R Foot	wheels
JSD04 = T Foot	sand shoe
JSD06 = LP T	low profile T foot