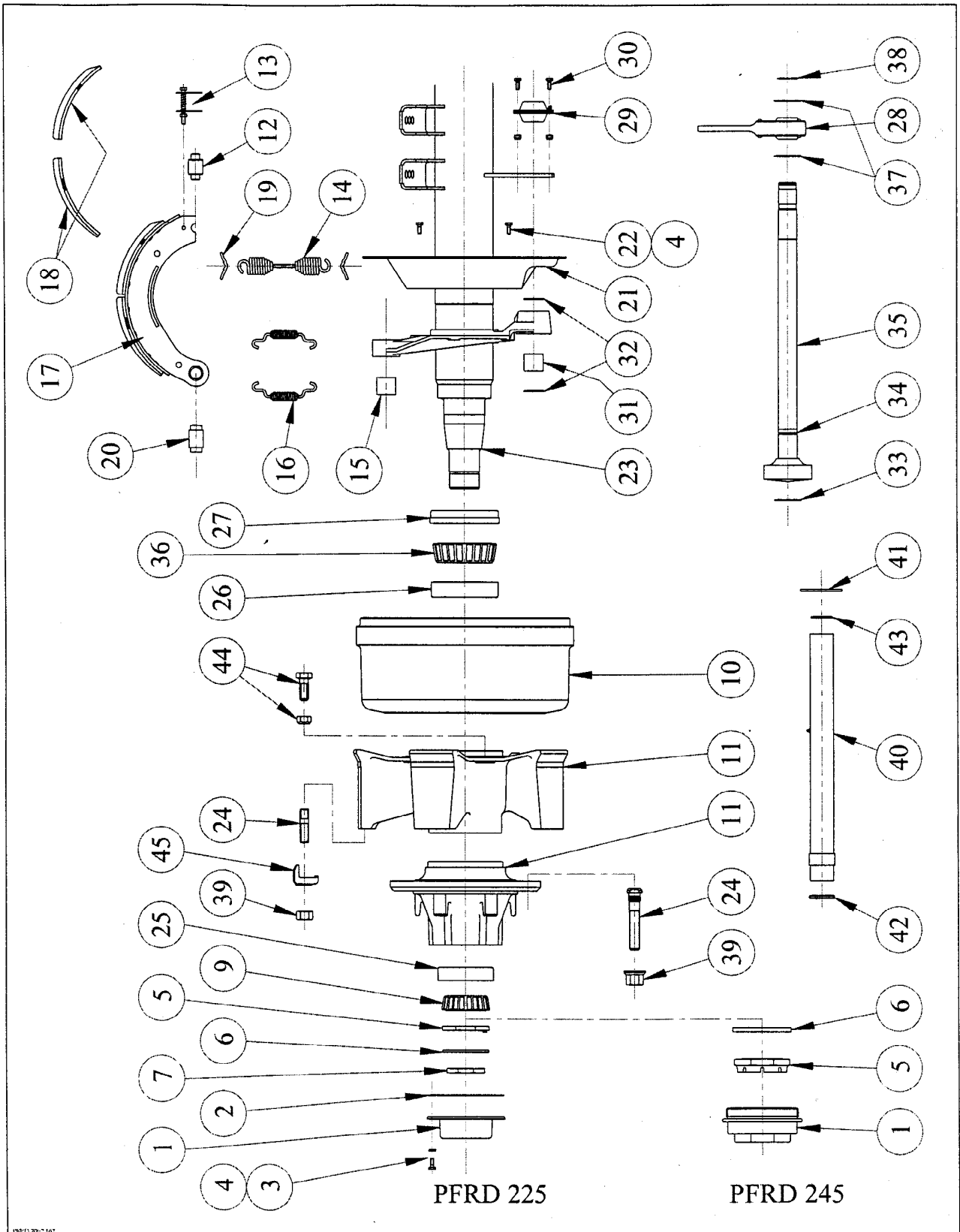


Barry Stoodley Pty Ltd

TMC TRAILER AXLE SPARE PARTS



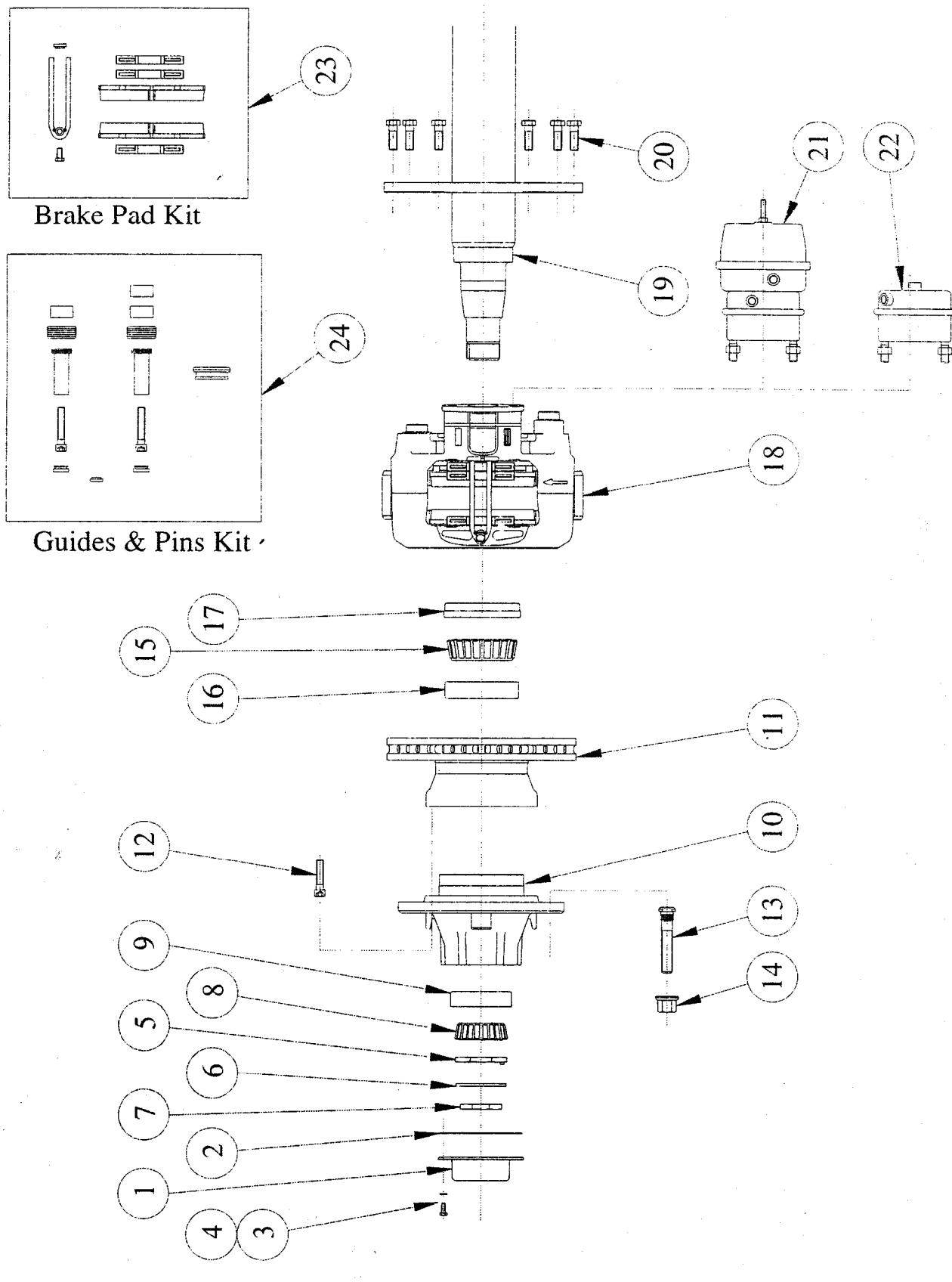
Barry Stoodley Pty Ltd

TMC TRAILER AXLE SPARE PARTS

Item	Model PFRD-225-167 Part Number	Model PFRD-245-167 Part Number	Description
1	810146	804345	Hub cap – grease
	810176		Hub cap – oil
2	810147		Hub cap gasket
3	9HBM08125020		Hub cap stud M8 x 20 long
4	9SWM08		Spring washer
5	810124	800110	Axle spindle adjusting nut
6	810123	800111	Axle spindle lock washer
7	810125		Axle spindle lock nut
9	810133/01	800064	Outer bearing cone
10	810110	810153	Brake drum – 5 spoke spider 420x180
	810160	810168	Brake drum – 10 stud x 285 pcd 420x180
	810158	810164	Brake drum – 10 stud x 335 pcd 420x180
11	810108	810151	Hub assembly – 5 spoke spider
	810102	810166	Hub assembly – 10 x 285 ISO steel
	810156	810162	Hub assembly – 10 x 335 ISO steel
	8106395		Hub assembly – 10 x 285 ISO aluminium
	8105366		Hub assembly – 10 x 335 ISO aluminium
12	810094	810094	Cam roller
13	800018	800018	Cam roller retainer
	810093	810093	Cam roller retainer – bolt on
14	800016	800016	Brake return spring
15	800002	800002	Anchor pin bush
16	800015	800015	Brake retainer spring – anchor end
17	800167	800167	Brake shoe lined – Q brake
	810170	810170	Brake shoe lined – P brake
18	810171	810171	Brake lining set inc. rivets
19	800013	800013	Brake return spring retainer pin
20	800014	800014	Anchor pin – Q brake
	810092	810092	Anchor pin – P brake bolt on
21	800003	800003	Dust cover
22	9HBM08125025	9HBM08125025	Dust cover bolt M8 x 25 long
23	810130/contact TMC	810139/contact TMC	Axle beam assembly
24	810112	810112	Wheel stud – spider hub
	810148	810148	Wheel stud – M22 ISO x 125mm (long)
	810144	810144	Wheel stud – M22 ISO x 100mm (short)
25	810133/02	800065	Outer bearing cup
26	810132/02	800065	Inner bearing cup
27	810135	800723	Hub seal
28	800052	800052	Slack adjuster
29	800001	800001	Inner cam support bushing
30	9HBM10150030	9HBM10150030	Bolt M10 x 30 long
31	800005	800005	Outer cam bushing
32	800032	800032	Camshaft seal
33	810122	810122	Camshaft washer 1 ½”
34	800034	800034	Circlip 1 ½”
35	810117/606L	810117/606L	Camshaft 37 spline - left hand
	810117/606R	810117/606R	Camshaft 37 spline - right hand
36	810132/01	800064	Inner bearing cone
37	810122	810122	Camshaft washer 1 ¼”
38	810121	810121	Circlip 1 ¼”
39	810113	810113	Wheel nut – spider
	810145	810145	Wheel nut – M22 ISO
40	810206	810206	Enclosed cam tube assembly
41	810201	810201	Enclosed cam tube support plate
42	810208	810208	Enclosed cam tube seal – outer
43	810207	810207	Enclosed cam tube seal – inner
44	810114	810114	Hub drum bolt and conelock nut assy. ¾”UNF x 2¼”
	810169	810169	ABS pole wheel – 100 tooth

Barry Stoodley Pty Ltd

TMC DISC BRAKE



Barry Stoodley Pty Ltd

TMC DISC BRAKE PARTS LIST

Item	Part Number	Description
1	810146	Hubcap – grease
	810176	Hubcap – oil
2	810147	Hubcap gasket
3	9HBM08125020	Hubcap stud M8 x 20 long
4	9SWM08	Hubcap spring washer
5	810124	Axle spindle adjusting nut
6	810123	Axle spindle lockwasher
7	810125	Axle spindle lock nut
8	81HM212049	Outer bearing cone
9	81HM212011	Outer bearing cup
10	820121	Hub 10 stud x 285 pcd
	820122	Hub 10 stud x 285 pcd ABS
	820126	Hub 10 stud x 335 pcd
	820127	Hub 10 stud x 335 pcd ABS
	820123	Hub 8 stud x 275 pcd
	820124	Hub 8 stud x 275 pcd ABS
11	820105	Rotor – 377mm diameter
12	9SHM14150060	Hub to rotor bolt M14 x 60 long Gr 10.9
13	810144	Wheel stud M22 x 100 long
	810148	Wheel stud M22 x 125 long
14	820145	Wheel nut M22
15	81HM218248	Inner wheel bearing cone
16	81HM218210	Inner wheel bearing cup
17	810135	Hub seal
18	820107	Disc brake caliper assembly LH
	820106	Disc brake caliper assembly RH
19	820101	Axle beam assembly
20	9HBM16150050	Caliper attachment bolts M16 x 50 long Gr 10.9
21	820108/01	Spring brake chamber Type 14/24 LH
	820108/02	Spring brake chamber Type 14/24 RH
	820109/01	Spring brake chamber Type 16/24 LH
	820109/02	Spring brake chamber Type 16/24 RH
	820110	Spring brake chamber Type 18/24
	820131	Spring brake chamber Type 16/16
22	820132	Brake chamber Type 16
23	820737	Replacement brake pad set (per axle)
24	820738	Replacement caliper guide pins and seals set (per axle)